



Nottingham Trent
University

Director of Estates and Campus Services Doing things differently





Thank you for your interest in Nottingham Trent University.



Dear Applicant,

I am delighted that you are considering applying for the role of Director of Estates and Campus Services at Nottingham Trent University (NTU). Reporting directly to me, you will be an important member of the University's Extended Executive Team as we enter into the next phase of our University's development, led by our new Vice-Chancellor, Professor Dave Petley.

At NTU, we are passionate about creating spaces and environments that inspire and transform lives. This has been reflected in numerous national awards, and we have been recognised as one of the most sustainable universities in the world.

But this role is about the future. We need an experienced leader who can bring innovation and insight to ensure we use our outstanding assets and facilities to deliver a great student and colleague experience, and support the delivery of great teaching, learning and research. Commercially oriented, you will need to have a great customer focus and be able to facilitate opportunities to bring in additional income.

If you're excited about leading the continued development of our estate and campus services, I look forward to your application.

Steve Denton
Chief Operating Officer and Registrar,
Nottingham Trent University

Be part of something special

It takes excellent leadership and a strong sense of community to create an award-winning university, and we are justly proud of our achievements.

At NTU, we do things differently. We're proud of our global reputation for innovation; our inspirational, TEF 'Gold'-rated teaching; our award-winning student support services; and our life-changing research outputs, which are answering society's most pressing questions.

All of this is reflected in our five 'University of the Year' awards, our rank of 1st in the UK for Employability, and the fact we were voted by students as the UK's best university in 2025 (Uni Compare).



NTU has been awarded 5 stars for facilities by QS Stars, recognising our £570 million investment in world-class learning environments since 2000. We have modern teaching spaces, and excellent buildings and facilities across five campuses.



Opened in September 2024, the £35 million Design & Digital Arts building delivers a sustainable, future-focused facility designed to BREEAM 'Excellent' standards, with advanced tech and collaborative spaces.



We are recognised as one of the world's top universities for sustainability, ranking 2nd in the UI GreenMetric World Rankings 2024, and we secured a Green Gown Award in 2025 for our pioneering Net Zero Carbon Supplier Tool.



Our campuses

Based across five distinct and characterful locations in and around Nottingham, Nottinghamshire and London, our campuses and facilities are a key part of our success.



City Campus

Our City Campus is a focal point of Nottingham's skyline, with stunning Grade-II listed structures like the Newton and Arkwright buildings standing alongside bold, stylish developments like our Design & Digital Arts building. Just a stone's throw away, the University helps drive growth for creative and digital businesses in places like Hockley, the Lace Market and Sneinton Market.



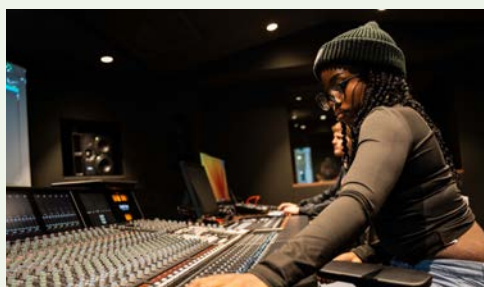
Clifton Campus

With beautiful outdoor spaces and outstanding facilities, Clifton Campus is home to specialist science and technology laboratories, diverse teaching spaces, comfortable study and leisure areas, and a vast array of indoor and outdoor sports facilities. The Health & Allied Professions Centre supports world-class teaching, practice, research and scholarship, while our Engineering building and the Medical Technologies Innovation Facility (MTIF) strengthen Clifton's position as a hub for innovation, applied research, and industry collaboration.



Brackenhurst Campus

Located just outside the picturesque market town of Southwell, our Brackenhurst Campus offers a fascinating juxtaposition of nature and science. At the centre of the campus is the iconic Main Hall: venture further, and you'll find climate-controlled greenhouses and polytunnels, a veterinary nursing centre, our equestrian facilities, state-of-the-art laboratories, and even a working farm.



NTU London

Our London campus is a specialist centre for digital arts, production and performance in Whitechapel. It mirrors the vision and ambition of our Nottingham facilities, with the added bonus of direct access to the Capital's creative industries.



NTU Mansfield

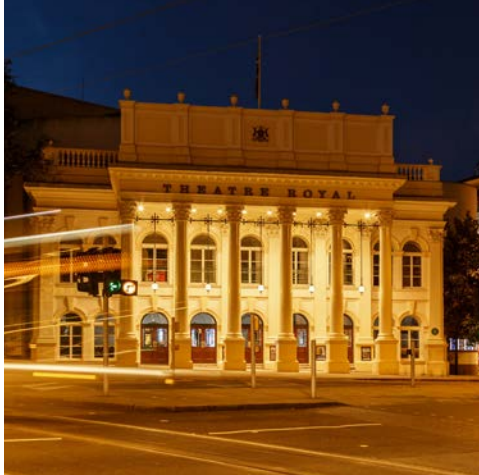
Located just outside of Mansfield town, the University Centre – developed in partnership with Vision West Nottinghamshire College – provides a range of education and training to local students and employers, with courses and qualifications from levels 3 to 7.



Our city

From stunning country parks to bustling city streets, Nottingham is a city bursting with character.

With some of the country's best art galleries, music venues, restaurants and events, it's easy to see why Nottingham is one of the UK's top 10 student cities (QS Best Student Cities 2026), attracting well over 60,000 students every year.



Known throughout the world for the famous legend of Robin Hood, today Nottingham is a dynamic creative hub. Our castles, caves and cultural attractions unite the past and present, making Nottingham a fascinating place to live. The city also offers excellent transport links, with East Midlands Airport giving you easy access to countless destinations across the UK, Europe and beyond.

Life in the city

From Michelin-starred restaurants like Alchemilla and Restaurant Sat Bains, to casual eateries and some of England's oldest pubs, there's something here to suit every taste. Sitting alongside its varied hospitality scene, Nottingham's lively shopping streets offer everything from high street favourites to designer labels and sophisticated independent stores. The city centre is a hub of activity day and night, and it is right on the doorstep of our City Campus.

Where hustle becomes hushed

Over 20% of Nottingham is devoted to public parks and gardens, while rolling hills, peaceful nature reserves and luscious woodland – including Sherwood Forest, home to the legendary Robin Hood – all lie just outside the city itself. The Peak District National Park and a range of National Trust and Visit England sites are all easily accessible from Nottingham, too.

Local legends

Nottingham is the proud hometown of several legends, like Carl Froch, Torvill and Dean, and Stuart Broad. We are truly a city of sport, home to the

world's oldest professional football club, and a club at the peak of their career in the Premier League. Nottingham hosts several internationally recognised stadia - including the iconic Trent Bridge cricket ground - as well as popular venues for horseracing, ice hockey, watersports, and more.

A sensible choice, for head and heart

Choosing a destination for a new home is a big decision, with many factors to consider. Whether you are looking to buy or rent, the city offers a diverse range of properties in vibrant urban settings, scenic riverside locations, and welcoming residential neighbourhoods. Areas such as West Bridgford, Mapperley and Beeston are popular choices for those seeking a community-oriented environment, while the historic charm of the Park Estate provides a distinctive sense of character.

Cultural treasures

Nottingham's history is rich, and the city is dotted with historic hotspots to explore like Nottingham Castle, the National Justice Museum, and a fascinating underground cave network. Our present-day cultural scene is just as vibrant, including art at Nottingham Contemporary, theatre at Nottingham Playhouse, music at Motorpoint Arena, and a host of intimate venues spanning every genre.



University strategy

‘University, reimagined’ was developed in partnership with our colleagues, students and stakeholders. It articulates our ambitions across six key themes.



Creating Opportunity

We have pursued personalisation of student experience above and beyond expectations. Every student has the potential to develop the knowledge, skills and resilience they seek to create meaning and purpose in their lives. Our global community of lifelong learners has access to flexible courses of equal quality to our celebrated campus provision. The University's delivery of social mobility through parity of outcomes has bestowed international recognition.



Valuing Ideas

We have defined, resourced, and promoted a compelling portfolio of world-class research and innovation. We have created new ways for collaborators to share in the spirit of creativity and curiosity that characterises our research, scholarship, and practice.



Enriching Society

NTU is a widely acknowledged force for good in economic, social and cultural development. We collaborate with those who like us want to address the key challenges of our times and our places.



Embracing Sustainability

NTU has curated an intergenerational conversation with our students, colleagues, and stakeholders; we are recognised to be the most socially, economically and environmentally responsible University in the UK.



Connecting Globally

We have gained renown for our truly global perspective. We are not restricted by borders or boundaries and work together to deepen and share our insights and understanding of our world for the benefit of the planet and all its inhabitants.



Empowering People

Distinctive and disruptive, we have empowered people to do the right thing. We have been bold in exploring unfamiliar paths and pursuing novel solutions.

Our Principles, Our Ways

Our Principles shape how we approach work at NTU, in support of our strategic ambitions.

Our Ways represents a commitment to making a difference, taking bold steps, and maintaining moral standards.

It's about proactively creating positive change while prioritising integrity and accountability in all our actions.

Our Principles

We change lives

We are bold

We do the right thing

Our Ways

Relationships with others

Adaptability

Planning and delivering work

Delivering through others

Problem-solving

Accountability

Developing yourself

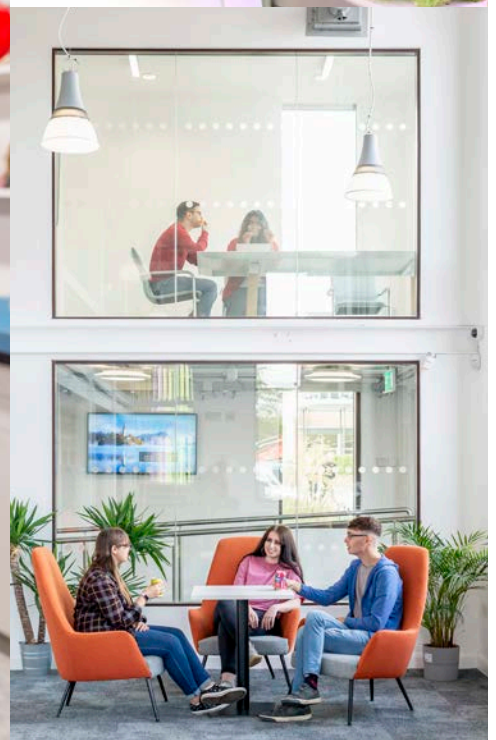


Our Academic Schools

Each of our seven Academic Schools have their own sense of community and character, built on enthusiasm, expertise, opportunities and award-winning support.

Our Academic Schools

- Nottingham Business School
- Nottingham Law School
- Nottingham School of Art & Design
- School of Animal, Rural and Environmental Sciences
- School of Architecture, Design and the Built Environment
- School of Science and Technology
- School of Social Sciences



Key opportunities

Driving the strategy

As a member of the Extended University Executive Team [EUET], you'll make a significant contribution to the strategic direction of the University, through the development of facilities and services which enhance the student and colleague experience.

Delivering excellence

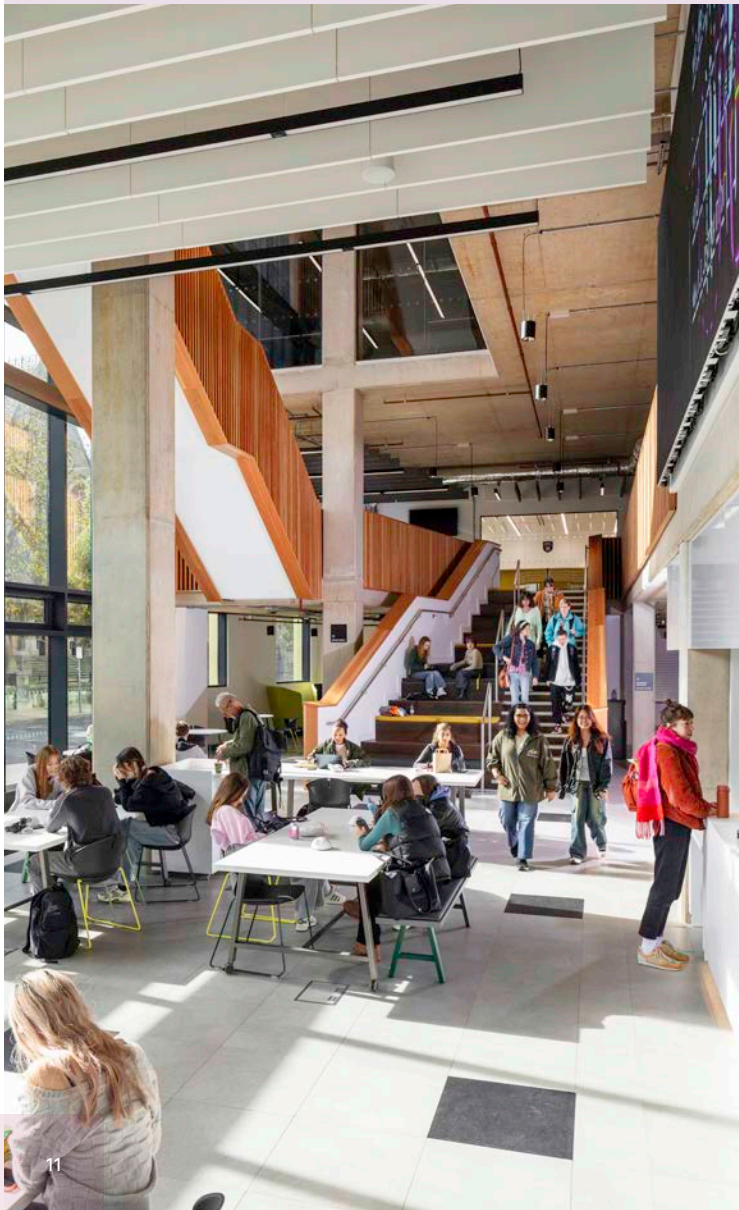
By leading and defining the strategy for the future of our estates, you will play an integral role in enhancing NTU's reputation as a leading university for teaching, research and innovation, whilst shaping the student experience across our distinct campuses.

Leading positive change

You'll play an active role in leading, challenging and developing diverse and inclusive teams. Through working together, we will realise our aspirations as a university and inspire others to do the same.

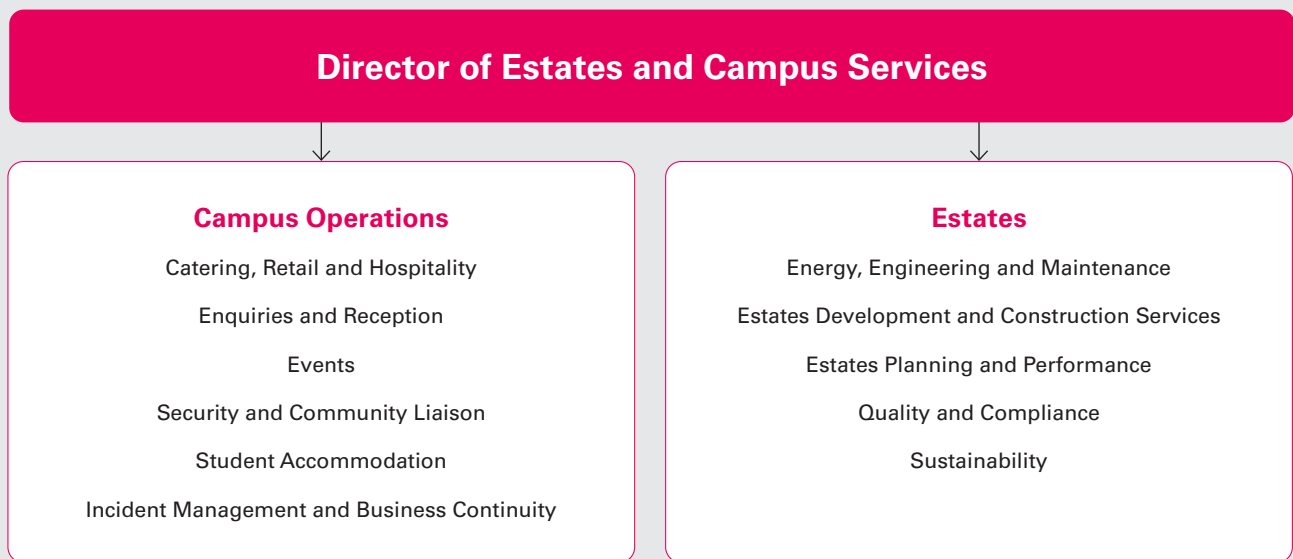
Championing sustainability

You'll guide and support our sustainability ambitions, reducing our environmental impact by ensuring that a sustainable and environmentally responsible culture lies at the heart of everything we do.



Director of Estates and Campus Services

Key areas of responsibility:



Reporting to:

Chief Operating Officer and Registrar

Direct Reports / Reporting Functions:

Deputy Director of Estates

Director of Campus Operations

Role description:

To provide strategic leadership for development, management and optimisation of NTU's physical environment in support of the delivery of the University's Strategic Plan objectives. Lead on the creation of environments that are welcoming, which inspire teaching, learning and research, and which facilitate an outstanding student and colleague experience. Ensure the safety and security of our colleagues, students and visitors. Ensure that our estate is being used efficiently and effectively. Have oversight of student accommodation.

Duties and responsibilities of the role:

- Ensure the estate continues to deliver innovative teaching and learning spaces, world-class research and innovation facilities, and supports the commercial, social, environmental and cultural ambitions of the University. Ensure the integration of the digital infrastructure with the physical estate.
- Deliver a range of services that create an inviting and safe campus environment, including enquiries and a commercial customer-led retail provision.
- Ensure that we optimise the use of our estate so that we can deliver our strategic ambitions whilst being efficient, effective and sustainable, and that this is evidenced through internal / external metrics and benchmarks.
- Lead the formulation and implementation of the medium- to long-term approach on the effective use and development of the estate through consultation with the University Executive Team, Extended University Executive Team, University Leadership Team, Board of Governors, and the wider colleague and student community.
- Oversight and management of the current and medium-term estates revenue and capital plans, ensuring tight and transparent fiscal management across estates services.
- Ensure our student accommodation portfolio remains of the highest quality, and lead on the management of the relationship with our preferred accommodation provider and other providers, so that students have a choice of high-quality, affordable accommodation.
- Take a commercially-oriented approach to the proactive management of the University's physical capital assets, including acquisition and disposal, and the commercial letting of the University's estate, including leasing to external parties, events and conferences etc.
- Provide visible, clear leadership to the Estates service exemplifying high performance, continuous improvement and sustainability, value for money, and adherence to regulatory and statutory standards.
- Ensure high standards of governance through compliance with statutory and regulatory requirements, particularly those relating to the physical safety of the environment and the legislation needed to keep the campus safe for students, colleagues and visitors, alongside effective risk management and rigorous, robust project management.
- Manage the relationships with Local Authority Planners, statutory agencies and other third parties who can influence the environment in which the estate operates.
- Manage the relationships with the University's supply chain providing services within the estate.
- Oversee liaison with the Association of University Director of Estates and other external bodies as appropriate.

Personal attributes:

Attributes	Essential	Desirable
Knowledge	<ul style="list-style-type: none"> Knowledge of translating organisational strategy into estate development, refurbishment and maintenance plans. Knowledge of regulations around campus security provisions, in-depth knowledge of revenue and capital financial management. Knowledge of the relevant regulatory and statutory requirements. 	
Skills	<ul style="list-style-type: none"> Understanding and translating a wide range of stakeholder requirements into estates and campus services plans. Delivering organisational goals as part of a senior leadership team. Managing risk within a complex estates environment. Communicating and influencing with a diverse group of stakeholders. Good commercial skills. Negotiating complex and financially significant contracts. Working with large data sets that ensure services and developments are delivered on time and to budget. Leadership of multifunctional teams within a large and complex organisation. Good understanding of how IT can support the effective management and development of the estate. 	
Experience	<ul style="list-style-type: none"> Experience of leading the development of medium- to long-term estates plans that directly deliver against institutional strategic aims. Experience of leading a multi-disciplinary estates function that successfully delivers against performance objectives across multiple sites (urban and rural). Knowledge of embedding sustainability into all Estates activities and services. Knowledge of integrating a digital infrastructure with the physical estate. Successful record of having initiated, developed and delivered refurbishments and capital projects in a complex estates portfolio. Developing and using key data metrics to monitor the progress and success of measures to ensure that the estate is used efficiently and effectively. Engagement with stakeholders to ensure that the physical estate is developed to meet current and medium-term requirements. Experience of delivering commercial, customer-led campus services. Leading on the development of plans to ensure a safe campus, robust continuity and disaster plans. 	Successfully leading a large function in a Higher Education environment
Qualifications	<ul style="list-style-type: none"> Essential Chartered professional membership in a relevant discipline. Degree or equivalent experience. 	

How to apply

Next steps

Anderson Quigley, an adviser to Nottingham Trent University, is carrying out an executive search in addition to the public advertisement.

To apply, please submit a CV and a supporting statement. Your CV should include:

- educational and professional qualifications
- full employment history
- the names and addresses of two referees.

Referees will not be approached until the final stages of the selection process and not without prior permission from candidates.

Your supporting statement should demonstrate your ability to meet the person specification (maximum two pages).

Please submit your documents to <https://andersonquigley.com/candidates/> using the reference **AQ3408**.

Contact Anderson Quigley

Should you wish to discuss the role in strict confidence, please contact our advising consultants at Anderson Quigley:

Carolyn Coates on +44 (0)7825 871 944, carolyn.coates@andersonquigley.com; or

Ed Pritchard on +44 (0)7980 817 927, ed.pritchard@andersonquigley.com

Closing date

The closing date for applications is noon on **Friday 9 January, 2026**.



Nottingham Trent
University

Follow us on social:

